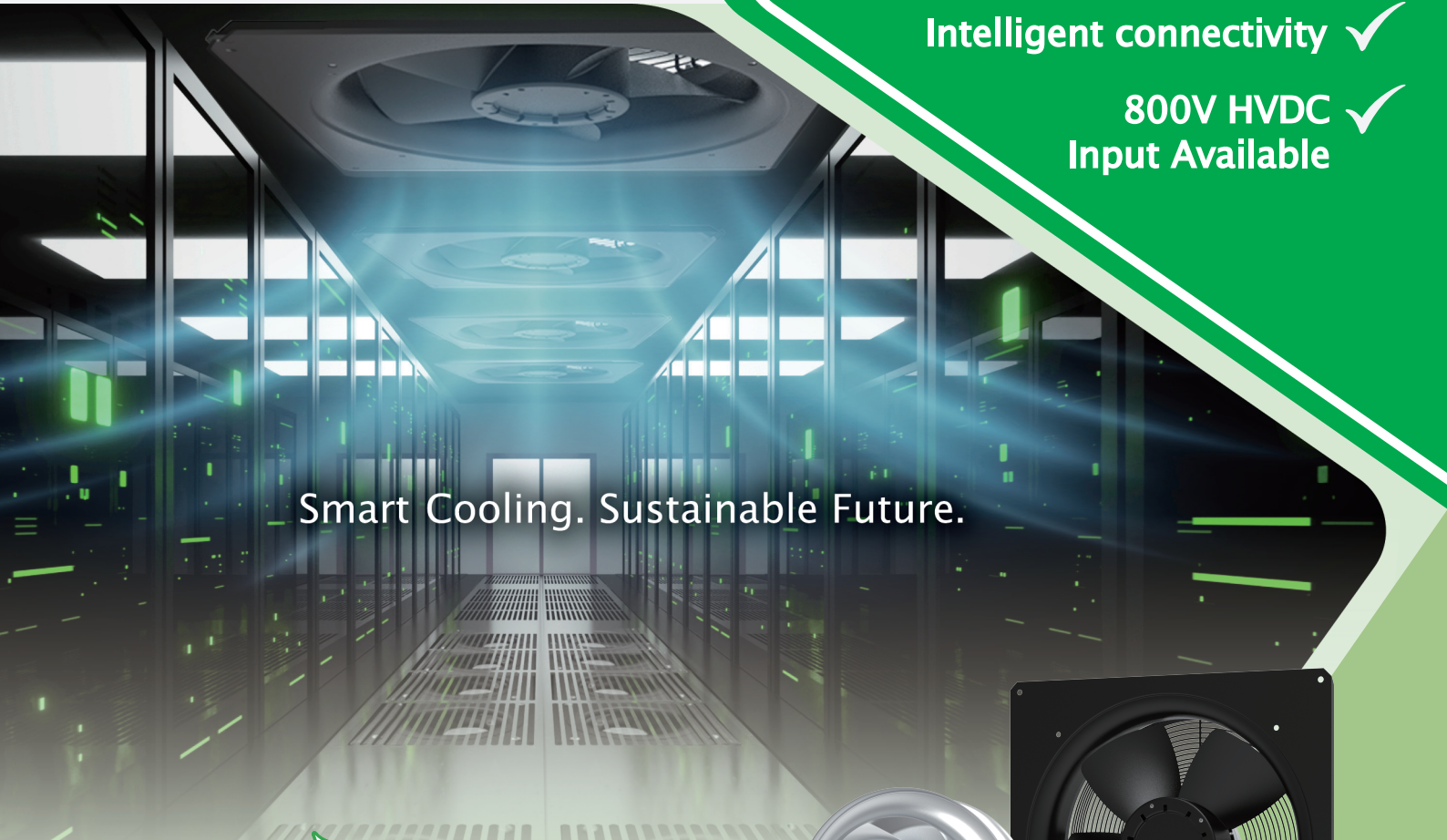


High AirFlow ✓

High Efficiency ✓

Intelligent connectivity ✓

800V HVDC Input Available ✓



Smart Cooling. Sustainable Future.

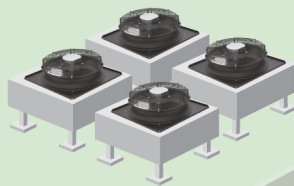


# Green EC Fans

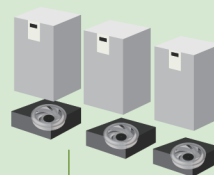
## for Data Center Precision Cooling



EC 500  
EC 630  
EC 710



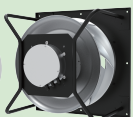
**Condenser**



**Room Cooling**

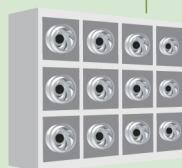
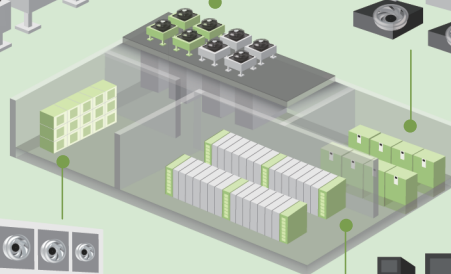


EC 560  
EC 630



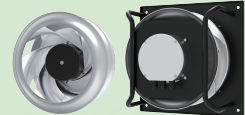
EC 560  
EC 630

**Fan Wall**



EC 800  
EC 910

**Row cooling**



EC 355  
EC 400

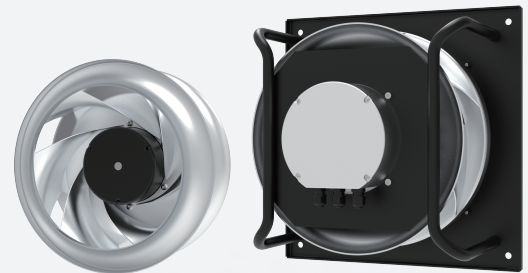


## Green EC Fans



### Axial Fan Series

	Part Number	Rated Voltage (VAC)	Freq. (Hz)	Max. Current (A)	Max. Power Cons. (W)	Fan Speed (RPM)	Air Flow (m³/h)	Static Pressure (Pa)	Ambient temperature (°C)	Noise @ free air (dBA)
EC500	CFAA350KG-1000U-IJ9	1~200-277	50/60	3.08	707	1,620	5,963	167	-25~+60	79.3
	CFAP550KG-1000U-IJ9	3~380-480	50/60	2.00	1,217	1,970	7,443	262	-25~+60	83.5
EC630	CFAP563LG-1000U-IJ9	3~380-480	50/60	1.94	1,165	1,170	8,623	211	-25~+60	81.6
EC710	CFAP571MH-1000U-IJ9	3~380-480	50/60	5.80	3,800	1,680	14,999	426	-25~+50	86.0
EC800	CFAP580NH-1000U-IJ9	3~380-480	50/60	7.23	3,151	1,075	21,874	259	-25~+50	90.0
EC910	CFAP591NH-1000U-IJ9	3~380-480	50/60	4.41	2,642	1,010	21,350	262	-25~+50	82.0



### Centrifugal Fan Series

	Part Number	Rated Voltage (VAC)	Freq. (Hz)	Max. Current (A)	Max. Power Cons. (W)	Fan Speed (RPM)	Air Flow (m³/h)	Static Pressure (Pa)	Ambient temperature (°C)	Noise @ free air (dBA)
EC355	CBAA335ME-1000U-IJ9	1~200-277	50/60	2.28	519	2,000	2,912	387	-25~+60	83.0
	CBIA335LE-1000U-IJ9	1~200-277	50/60	2.28	519	2,000	2,912	387	-25~+60	83.0
	CBAP535MG-1000U-IJ9	3~380-480	50/60	2.50	1,500	2,950	3,551	969	-40~+40	91.0
	CBIP535LG-1000U-IJ9	3~380-480	50/60	2.50	1,500	2,950	3,551	969	-40~+40	91.0
	CBAP535NG-1000U-IJ9	3~380-480	50/60	5.98	3,700	4,050	5,752	1,431	-40~+40	105.8
	CBIP535MG-1000U-IJ9	3~380-480	50/60	5.98	3,700	4,050	5,752	1,431	-40~+40	105.8
EC400	CBAP540NG-1000U-IJ9	3~380-480	50/60	2.53	1,500	2,700	2,385	1,245	-40~+40	92.0
	CBIP540MG-1000U-IJ9	3~380-480	50/60	2.53	1,500	2,700	2,385	1,245	-40~+40	92.0
EC560	CBAP556SH-1000U-IJ9	3~380-480	50/60	6.87	4,172	1,850	11,235	897	-25~+50	92.0
	CBIP556RH-1000U-IJ9	3~380-480	50/60	6.87	4,172	1,850	11,235	897	-25~+50	92.0
EC630	CBAP563SH-1000U-IJ9	3~380-480	50/60	6.67	4,229	1,550	11,936	857	-25~+50	90.0
	CBIP563RH-1000U-IJ9	3~380-480	50/60	6.67	4,229	1,550	11,936	857	-25~+50	90.0

\* Specifications are subject to change without notice.

