

SUNON®

BRYTEC
Our service, your profit!

Customization ✓

High IP Rating Protection ✓

Robust & Reliable Design ✓

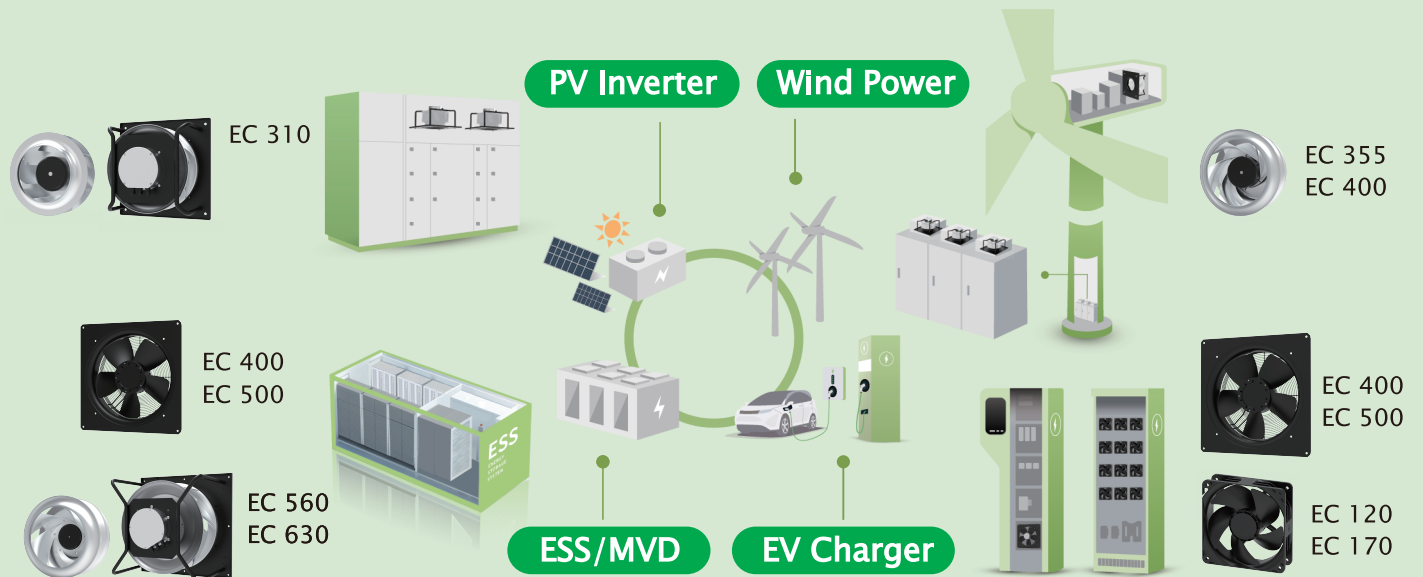
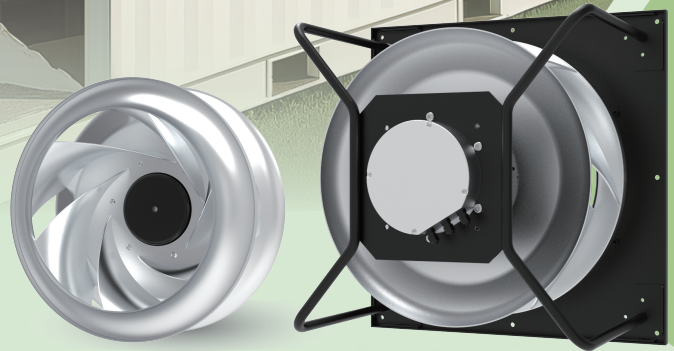
Smart Cooling. Sustainable Future.

Battery Energy Storage



Green EC Fans

for Industrial & Energy Cooling Systems



Brytec AG, Ringstrasse 13, 4123 Allschwil – Switzerland
Brytec GmbH, Vierthalerstrasse 5, 5020 Salzburg – Austria
Sales expert: M Philippe Trommenschlager / info@brytec.com

2026/04/01 (275-E)

© 2026 SUNONWEALTH Electric Machine Industry Co., Ltd.



Axial Fan Series

	Part Number	Rated Voltage (VAC)	Freq. (Hz)	Max. Current (A)	Max. Power Cons. (W)	Fan Speed (RPM)	Air Flow (m³/h)	Static Pressure (Pa)	Ambient temperature (°C)	Noise @ free air (dBA)
EC400	CFAA340GE-1000U-IJ9	1~200-277	50/60	2.19	498	1,650	3,521	177	-25~+60	72.0
EC500	CFAA350KG-1000U-IJ9	1~200-277	50/60	3.08	707	1,620	5,936	167	-25~+60	79.3
	CFAP550KG-1000U-IJ9	3~380-480	50/60	2.00	1,217	1,970	7,443	262	-25~+60	83.5



Eco EC Axial Fan Series

	Part Number	Rated Voltage (VAC)	Freq. (Hz)	Max. Current (A)	Max. Power Cons. (W)	Fan Speed (RPM)	Air Flow (m³/h)	Static Pressure (Pa)	Ambient temperature (°C)	Noise @ free air (dBA)
120x38	CF4113XBL-2000U-SE4	1~100-240	50/60	0.16/0.09	9.6	3,950	232	177	-40~+70	53.0
171x51	CF4175HBL-1000U-SE4	1~100-240	50/60	0.38/0.20	19.0	3,660	401	196	-30~+70	56.0

Options: IP21, IP55+ATEX, IP68+ATEX
EN60335-2-89



Centrifugal Fan Series

	Part Number	Rated Voltage (VAC)	Freq. (Hz)	Max. Current (A)	Max. Power Cons. (W)	Fan Speed (RPM)	Air Flow (m³/h)	Static Pressure (Pa)	Ambient temperature (°C)	Noise @ free air (dBA)
EC310	CBAA331ME-1000U-IJ9	1~200-277	50/60	2.19	496	2,450	2,498	392	-25~+60	72.0
	CBIA331LE-1000U-IJ9	1~200-277	50/60	2.19	496	2,450	2,498	392	-25~+60	72.0
	CBAP531NE-1000U-IJ9	3~380-480	50/60	2.45	1,481	3,576	3,682	913	-40~+40	95.0
	CBIP531ME-1000U-IJ9	3~380-480	50/60	2.45	1,481	3,576	3,682	913	-40~+40	95.0
EC355	CBAA335ME-1000U-IJ9	1~200-277	50/60	2.28	519	2,000	2,912	387	-25~+60	83.0
	CBIA335LE-1000U-IJ9	1~200-277	50/60	2.28	519	2,000	2,912	387	-25~+60	83.0
	CBAP535MG-1000U-IJ9	3~380-480	50/60	2.50	1,500	2,950	3,551	969	-40~+40	91.0
	CBIP535LG-1000U-IJ9	3~380-480	50/60	2.50	1,500	2,950	3,551	969	-40~+40	91.0
	CBAP535NG-1000U-IJ9	3~380-480	50/60	5.98	3,700	4,050	5,752	1,431	-40~+40	105.8
	CBIP535MG-1000U-IJ9	3~380-480	50/60	5.98	3,700	4,050	5,752	1,431	-40~+40	105.8
EC400	CBAP540NG-1000U-IJ9	3~380-480	50/60	2.53	1,500	2,700	2,385	1,245	-40~+40	92.0
	CBIP540MG-1000U-IJ9	3~380-480	50/60	2.53	1,500	2,700	2,385	1,245	-40~+40	92.0
EC560	CBAP556SH-1000U-IJ9	3~380-480	50/60	6.87	4,172	1,850	11,235	897	-25~+50	92.0
	CBIP556RH-1000U-IJ9	3~380-480	50/60	6.87	4,172	1,850	11,235	897	-25~+50	92.0
EC630	CBAP563SH-1000U-IJ9	3~380-480	50/60	6.67	4,229	1,550	11,936	857	-25~+50	90.0
	CBIP563RH-1000U-IJ9	3~380-480	50/60	6.67	4,229	1,550	11,936	857	-25~+50	90.0

* Specifications are subject to change without notice.

