

SUNON®

BRYTEC
Our service, your profit!

Energy Saving ✓

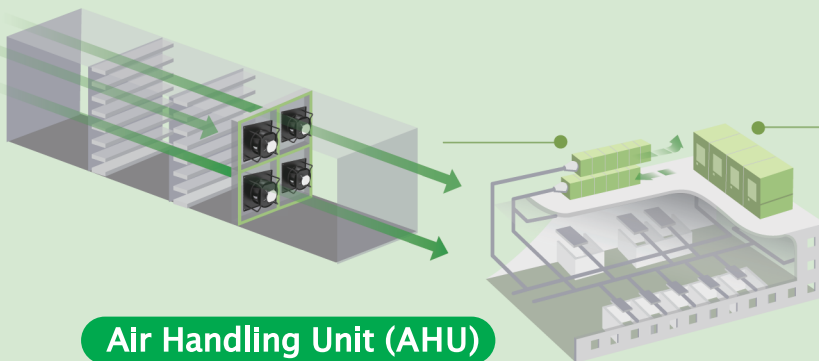
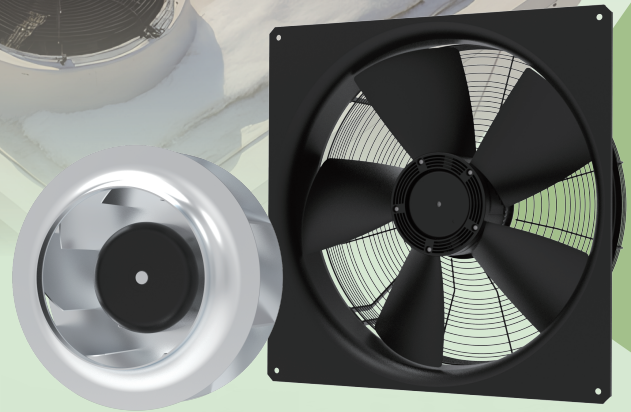
Low Operating Temperature ✓

Quiet Residential Operation ✓

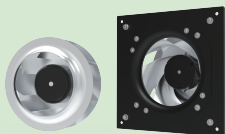
Smart Cooling. Sustainable Future.



Green EC Fans for Commercial Air Conditioning



Air Handling Unit (AHU)



EC 310 EC 500
EC 355 EC 560
EC 400 EC 630

Chiller



EC 710
EC 800
EC 910



Brytec AG, Ringstrasse 13, 4123 Allschwil – Switzerland
Brytec GmbH, Vierthalerstrasse 5, 5020 Salzburg – Austria
Sales expert: M Philippe Trommenschlager / info@brytec.com

2026/04/01 (275-E)

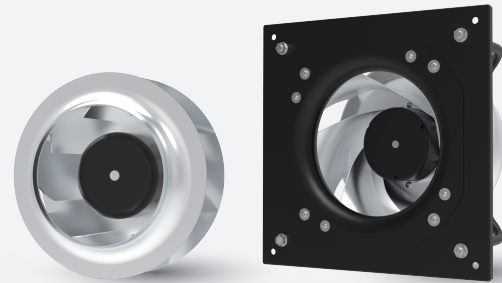
© 2026 SUNONWEALTH Electric Machine Industry Co., Ltd.

Green EC Fans



Axial Fan Series

	Part Number	Rated Voltage (VAC)	Freq. (Hz)	Max. Current (A)	Max. Power Cons. (W)	Fan Speed (RPM)	Air Flow (m³/h)	Static Pressure (Pa)	Ambient temperature (°C)	Noise @ free air (dBA)
EC710	CFAP571MH-1000U-IJ9	3~380-480	50/60	5.80	3,800	1,680	14,999	426	-25~+50	86.0
EC800	CFAP580NH-1000U-IJ9	3~380-480	50/60	7.23	3,151	1,075	21,874	259	-25~+50	90.0
EC910	CFAP591NH-1000U-IJ9	3~380-480	50/60	4.41	2,642	1,010	21,350	262	-25~+50	82.0



Centrifugal Fan Series

	Part Number	Rated Voltage (VAC)	Freq. (Hz)	Max. Current (A)	Max. Power Cons. (W)	Fan Speed (RPM)	Air Flow (m³/h)	Static Pressure (Pa)	Ambient temperature (°C)	Noise @ free air (dBA)
EC310	CBAA331ME-1000U-IJ9	1~200-277	50/60	2.19	496	2,450	2,498	392	-25~+60	72.0
	CBIA331LE-1000U-IJ9	1~200-277	50/60	2.19	496	2,450	2,498	392	-25~+60	72.0
	CBAP531NE-1000U-IJ9	3~380-480	50/60	2.45	1,481	3,576	3,682	913	-40~+40	95.0
	CBIP531ME-1000U-IJ9	3~380-480	50/60	2.45	1,481	3,576	3,682	913	-40~+40	95.0
EC355	CBAA335ME-1000U-IJ9	1~200-277	50/60	2.28	519	2,000	2,912	387	-25~+60	83.0
	CBIA335LE-1000U-IJ9	1~200-277	50/60	2.28	519	2,000	2,912	387	-25~+60	83.0
	CBAP535MG-1000U-IJ9	3~380-480	50/60	2.50	1,500	2,950	3,551	969	-40~+40	91.0
	CBIP535LG-1000U-IJ9	3~380-480	50/60	2.50	1,500	2,950	3,551	969	-40~+40	91.0
	CBAP535NG-1000U-IJ9	3~380-480	50/60	5.98	3,700	4,050	5,752	1,431	-40~+40	105.8
	CBIP535MG-1000U-IJ9	3~380-480	50/60	5.98	3,700	4,050	5,752	1,431	-40~+40	105.8
EC400	CBAP540NG-1000U-IJ9	3~380-480	50/60	2.53	1,500	2,700	2,385	1,245	-40~+40	92.0
	CBIP540MG-1000U-IJ9	3~380-480	50/60	2.53	1,500	2,700	2,385	1,245	-40~+40	92.0
EC500	CBAP550PH-1000U-IJ9	3~380-480	50/60	4.72	2,835	1,940	7,264	869	-25~+50	91.0
	CBIP550NH-1000U-IJ9	3~380-480	50/60	4.72	2,835	1,940	7,264	869	-25~+50	91.0
EC560	CBAP556SH-1000U-IJ9	3~380-480	50/60	6.87	4,172	1,850	11,235	897	-25~+50	92.0
	CBIP556RH-1000U-IJ9	3~380-480	50/60	6.87	4,172	1,850	11,235	897	-25~+50	92.0
EC630	CBAP563SH-1000U-IJ9	3~380-480	50/60	6.67	4,229	1,550	11,936	857	-25~+50	90.0
	CBIP563RH-1000U-IJ9	3~380-480	50/60	6.67	4,229	1,550	11,936	857	-25~+50	90.0

* Specifications are subject to change without notice.

